



2000 I-30 E
Greenville, TX 75402

Tuesday, January 24, 2023

Office of Hopkins County Judge
PO Box 288
Sulphur Springs TX 75483

Farmers Electric Cooperative Member: LINDA HAY
Service Order Number: 2022095232

Greetings:

Farmers Electric Cooperative, Inc. is requesting permission to construct electrical power distribution facilities which will cross County Road 1131 which is located 400 FT S OF CR 1136 in Hopkins County, Texas.

Site location map and construction sketches are enclosed. The construction sketch details the proposed work. All road crossings will have a minimum vertical clearance of 22 feet.

If you have any questions, please contact me at any time.

Sincerely,

Meagan Lee

Project Coordinator
meaganl@farmersselectric.coop
Phone 903-513-0378

Submitted by Psalm Harper
pharper@farmersselectric.coop
Field Engineering Coordinator

Enclosures

County Approval Section:

Approved:

Denied:

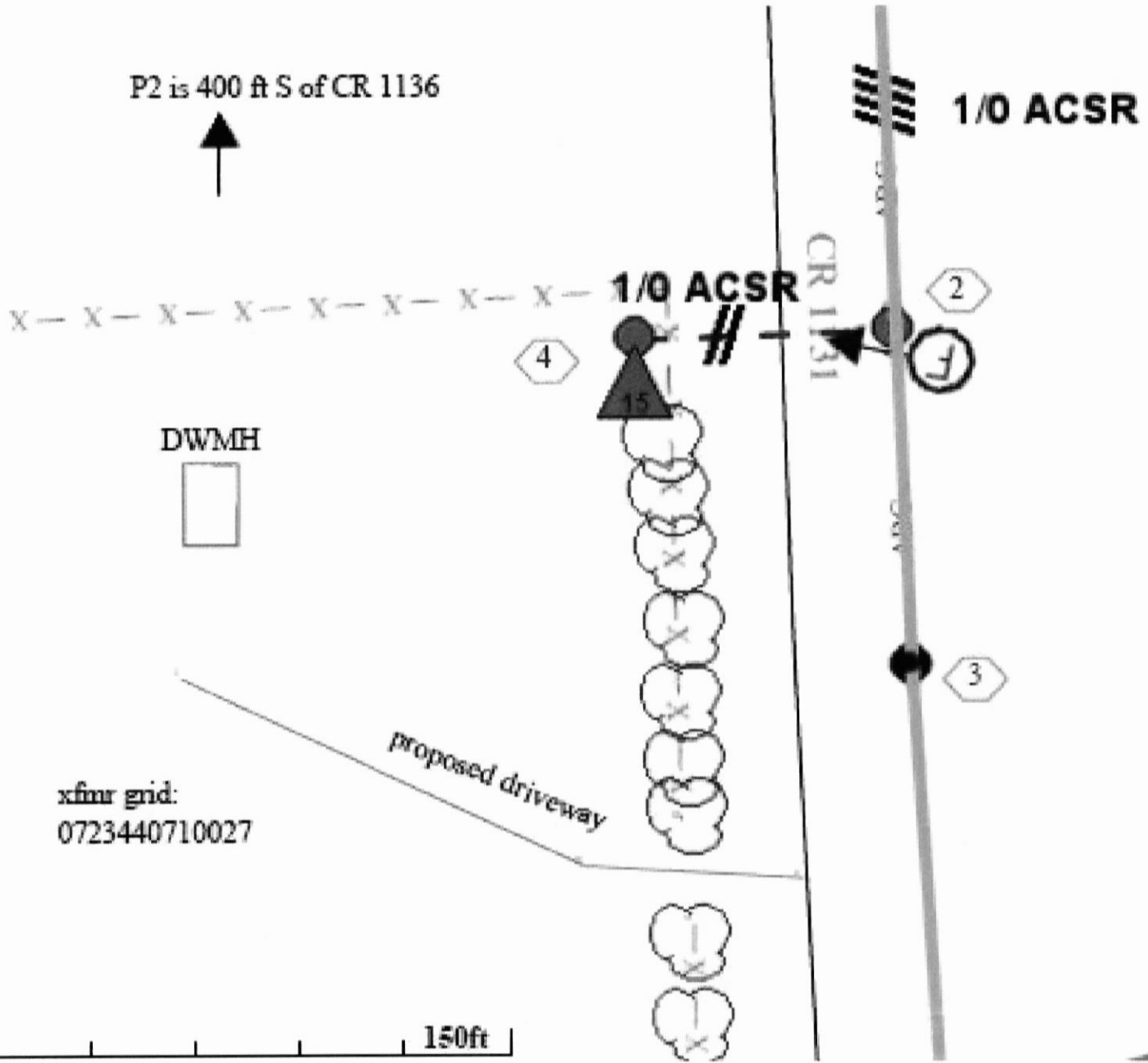
Authorized Signature: *Meagan Lee*

Date: 3-1-23

14.4K'



P2 is 400 ft S of CR 1136



1/0 ACSR

1/0 ACSR

CR 1136

2

3

4



DWMH



proposed driveway

xfmr grid:
0723440710027

150ft

New tap looks back at 70A OCR

**both new poles are at least
1 ft above road grade**

2 easements:

Crystal & Bradley Tackel
prop ID #R000029605

R & L Hay Investments LLC
prop ID #R000009480

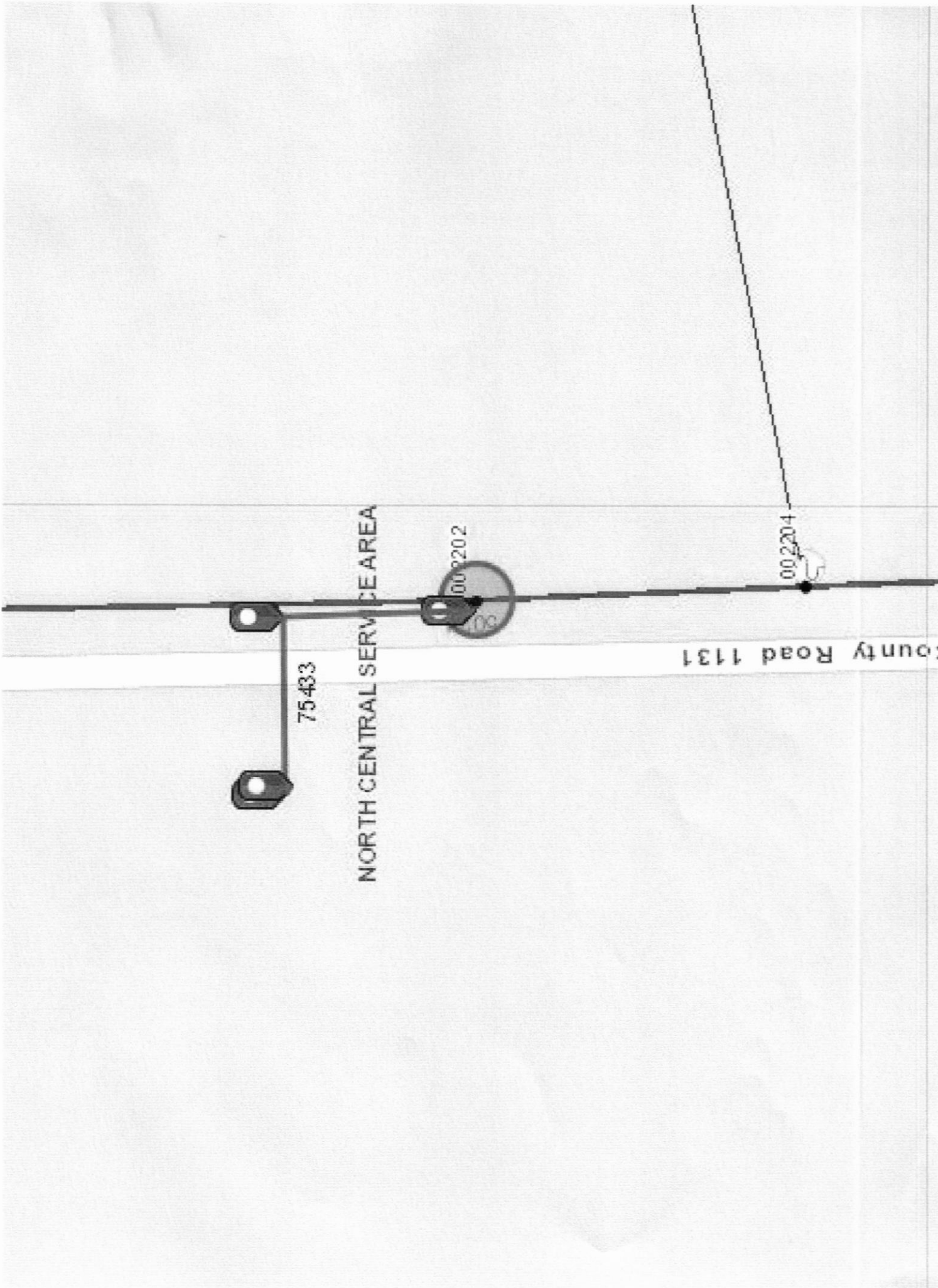
NORTH CENTRAL SERVICE AREA

75433

009202

002204

County Road 1131





Contract Numbers:
 CE - #597-19
 GM - #611-20

SVL75-2HFW WEB QUOTE #2594884
 Date: 2/28/2023 7:45:49 AM
 -- Customer Information --
 Fox, Lonnie
 Hopkins County Civic Center
 lfox@hopkinscountytx.org
 903-335-2093

Quote Provided By
 FARM COUNTRY, INC.
 Hunter Cooksey
 1111 INDUSTRIAL DR W
 SULPHUR SPRINGS, TX 75482
 email: hunter@farmcountrytx.com
 phone: 9038857561

-- Standard Features --

-- Custom Options --



Kubota

S Series

SVL75-2HFW

*** EQUIPMENT IN STANDARD MACHINE ***

FEATURES

Vertical Lift Path Loader Frame
 Standard Front Quick Coupler,
 Float Standard
 Hydraulic Quick Coupler Option
 Loader Boom Lock
 Open ROPS & Air Conditioned
 ROPS/FOPS Cab Models
 High Back, Adjustable, Vinyl,
 Suspension Seat
 2" Retractable Seat Belt and 2-
 Piece Seat Bar
 12V Electric Outlet
 17.4 gpm Auxiliary Hydraulics
 standard, 29.3 gpm Option
 Direct To Tank Return Line
 Rigid Mounted Undercarriage, 4
 Lower Track Rollers
 Rubber Tracks, 12.6" Standard,
 15" Optional
 Two Speed Travel System
 Automatic Wet Disk Parking
 Brake
 Kubota 4 Hydraulic Pump Load
 Sensing System
 2 Gear, 2 Variable
 Displacement Pumps
 Hydraulic Joystick Controls
 ISO Operating Pattern
 Hand And Foot Throttle
 Controls
 Electronic Travel Torque
 Management
 Automatic Glow Plugs
 Key Switch Stop/Start System
 Self Bleed Fuel System
 2 Front and 2 Rear Working
 Lights
 Hour Meter, Engine
 Temperature and Fuel
 Gauges and Warning Lights
 Horn and Backup Alarm
 Lockable Fuel Cap
 Bolt On Grab Handles to enter
 machine

BASIC UNITS

SVL75-2, 15.0" Rubber Tracks,
 Open ROPS/FOPS Cab
 Hydraulic Quick Coupler, High
 Flow Hydraulics

ENGINE

V3307 Kubota CR-TE4, Tier 4
 Diesel Engine
 4 Cylinder, 4 Cycle, Turbo Charged
 74.3 Gross HP @ 2400 rpm

DIMENSIONS

Cab Height 82.0"
 Width (without attachment) 65.9"
 Width with wide track option
 (without attachment) 68.3"
 Length (without attachment) 109.0"
 Length of Track on Ground 56.5"

**OPERATIONAL
 DIMENSIONS**

Operating Weight*, SVL75H, 12.6"
 Rubber Tracks, Open
 ROPS/FOPS Cab, Mechanical
 Quick Coupler 9,039 lbs.
 Rated Operating Capacity (@ 35%
 of Tipping Load) 2,300 lbs.
 Rated Operating Capacity (ROC)
 @ 35% of Tipping Load complies
 with ISO 14397-1 and SAE J 818
 for crawler loaders
 Rated Operating Capacity (ROC)
 @ 50% of Tipping Load 3,285 lbs.
 Tipping Load 6,570 lbs.
 Auxiliary Hydraulics Flow 17.4
 gpm
 Travel Speed (Low / High) 4.7 / 7.1
 mph
 Reach @ Maximum Height 41.7"
 Height to Hinge Pin 119.1"
 Ground Pressure 5.6 psi.
 Traction Force 9,678 lbf.

* Includes operator's weight, 175
 lbs.

SVL75-2HFW Base Price: \$71,884.00

(1) 74" HEAVY DUTY LOW PROFILE LONG
 FLOOR BUCKET (19.2 CU-FT) W/CUTTING EDGE
 AP-HD74LLC-74" HEAVY DUTY LOW PROFILE LONG FLOOR
 BUCKET (19.2 CU-FT) W/CUTTING EDGE

Configured Price: \$74,462.00

BUY BOARD Discount: (\$17,870.88)

SUBTOTAL: \$56,591.12

1Yr SVL75-2HFW Extended Warranty (3000 hrs) \$1,250.00

Dealer Assembly: \$0.00

Freight Cost: \$831.25

PDI: \$400.00

Total Unit Price: \$59,072.37

Quantity Ordered: 1

Final Sales Price: \$59,072.37

**Purchase Order Must Reflect
 the Final Sales Price**

To order equipment - purchase orders must be made out and
 returned to:

Kubota Tractor Corporation
 Attn: National Accounts
 1000 Kubota Drive
 Grapevine, TX 76051
 or email NA.Support@kubota.com
 or call 817-756-1171 or fax 844-582-1581

*All equipment specifications are as complete as possible as of the date on the quote. Additional attachments, options, or accessories may be added (or deleted) at the discounted price. All specifications and prices are subject to change. Taxes are not included. The PDI fees and freight for attachments and accessories quoted may have additional charges added by the delivering dealer. These charges will be billed separately. Prices for product quoted are good for 60 days from the date shown on the quote. All equipment as quoted is subject to availability.

© 2018 Kubota Tractor Corporation. All rights reserved.

015-673-570
 Hunter Cooksey